



# GMT MONTHLY MEMBERSHIP PROGRESS REPORT

Results as of: 2/29/2020

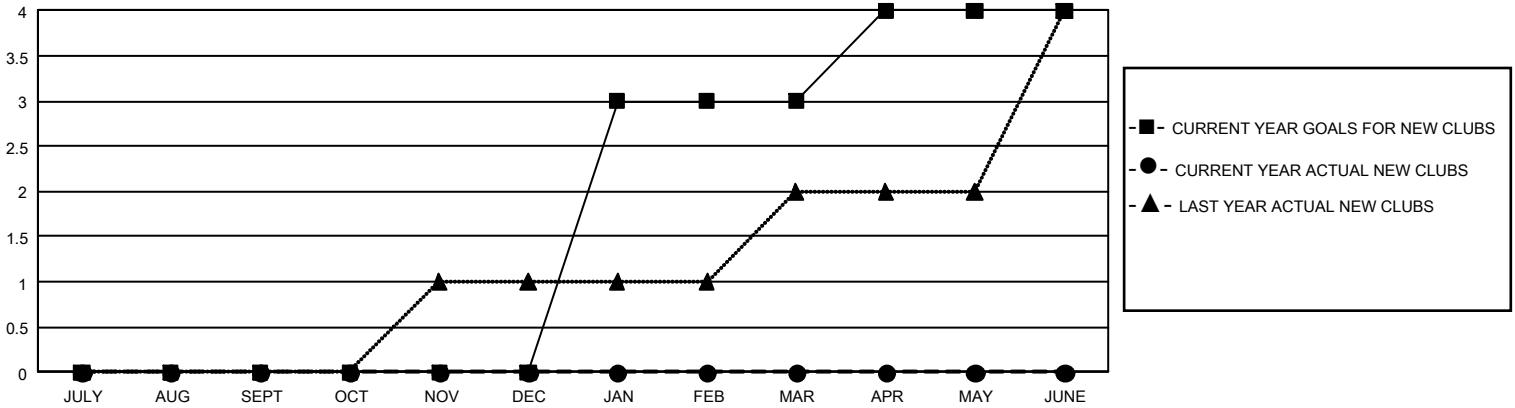
## GMT Constitutional Area 2, Group C

GMT: OPEN

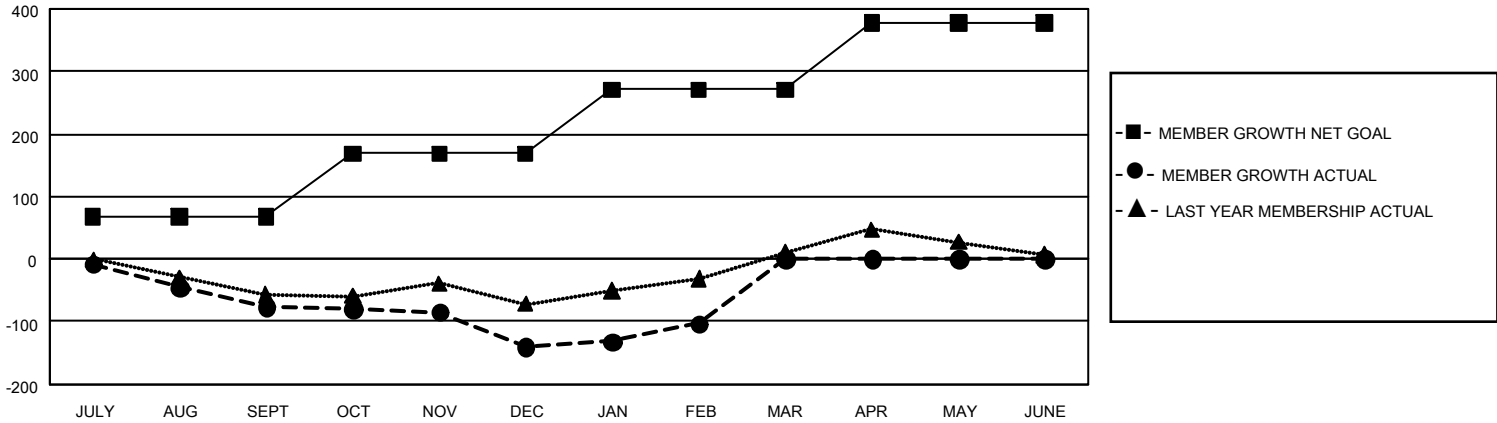
REPORT DOES NOT INCLUDE CLUBS IN UNDISTRICTED AREAS.

Clubs				Members			
RESULTS FOR 2019-2020				RESULTS FOR 2019-2020			
QUARTER	NEW CLUB GOAL	NEW CLUBS	DROPPED CLUBS	QUARTER	MEMBER GROWTH NET GOAL	MEMBER GROWTH ACTUAL	DROPPED MEMBERS ACTUAL (including transfers)
JULY/AUG/SEPT	0	0	2	JULY/AUG/SEPT	201	29	101
OCT/NOV/DEC	0	0	1	OCT/NOV/DEC	306	87	139
JAN/FEB/MAR	9	0	0	JAN/FEB/MAR	306	87	29
APR/MAY/JUNE	3	0	0	APR/MAY/JUNE	321	0	0

GOALS AND ACTUAL NEW CLUBS CUMULATIVE



GOALS AND ACTUAL MEMBERS CUMULATIVE



<b>DROPPED CLUBS: 3</b>	82 CLUBS OF 164 ADDED 1 OR MORE NEW MEMBERS	<u>GENDER DISTRIBUTION</u>	
<u>DROPPED MEMBERS</u>		MALE	2,578 (65.51%)
DECEASED	23	FEMALE	1,357 (34.49%)
CLUB CANCELLED	24	TOTAL FAMILY UNIT MEMBERS 678	
OTHER	222	FAMILY MEMBERS PAYING HALF DUES 344	
<b>TOTAL</b>	<b>269</b>		

[CLICK HERE FOR CUMULATIVE MEMBERSHIP DATA](#)